



## Wood Diffuser **Incense** Object

Beautiful incense shape that fills the space with scent



Feel the harmonious feeling.

e-mail : [info@treeyad.com](mailto:info@treeyad.com)

[www.treeyad.com](http://www.treeyad.com)



## Company Introduction

We manufacture trendy household items.  
I have been working as a product designer for 28 years and develop my own products from a designer's perspective.

We carry out everything from planning to design and mass production.

With the environment in mind, we make a variety of products using raw wood.  
We are also conducting OEM production in parallel.

Established in 2015

Patent 4ea

Won domestic and international design awards (Korea, Germany, Japan)

## Business area

- Manufacturing: self-developed products and OEM production
- Design: External design (product, package, etc.) service



## As More

It was unfortunate that commonly used materials such as plastic, rubber, and chemicals take hundreds to thousands of years to decompose, and in the process, they cause serious harm to the natural environment.



What will the future of Earth be like?

What will the lifespan of the Earth be like?

What will life be like for future generations?

## A starting point for nature and the environment

We started with the goal of making products using materials that can easily be returned to nature.



We started developing products with the goal of being as eco-friendly as possible by using 'trees'.

Although this is by no means perfect, we are making it in the hope that it can contribute, even in a small way, to extending life on Earth and the lives of future generations.

## Questions for the Earth

Earth's temperature is rising  
Icebergs melt and forest fires occur frequently.  
Concerns about the global environment begin to grow





## Wood Diffuser Incense Object

### Car & Desk or Home Deco luxuriously in a special shape

How do I fill the space I am in?

I want to fill the space with fragrance to feel my own sense of stability and memories and improve the quality of life.

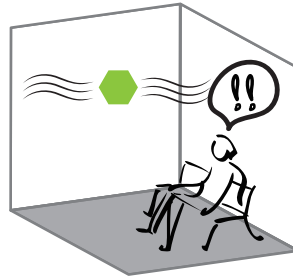
However, I feel the fragrance but I cannot see anything.

If I feel it visually along with the fragrance, the satisfaction I feel in the space will be richer.

The sense of smell and sight will come to me in harmony as memories.

From now on, I will suggest visual shapes that go well with fragrance.

Enrich my space and improve the quality of life.



As the diffuser air freshener culture spread, we conducted research on the scent emitter and created a structure that naturally emits more scent for a longer time. Developed various shapes with a design that allows for visual differentiation and individuality. Produced using wood and Korean paper with a high level of awareness of the environment.

If you use scent in your business space, visitors will remember the place because their sense of smell is stimulated.

In addition, if the visual form emits the scent, the memory will last longer with the visual stimulation added, and it will remain as a memory.

If you have a logo, emblem, etc., etc., and a unique shape for your business, order it.

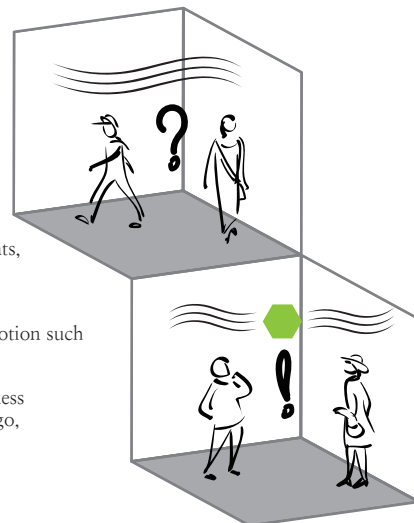
Visitors will remember and reminisce about the place for a long time.

You can promote it in various spaces such as hotels, restaurants, hospitals, event halls, art galleries, museums, business places, conference rooms, meeting rooms, etc.

You can also use it as a means of personal and business promotion such as gifts, souvenirs, and giveaways.

We are a company that has been in the industrial design business for nearly 30 years, and we can create designs in the form (logo, emblem, etc.) that your company wants.

Thank you.



We added a trendy design sensibility to differentiated eco-friendly high-quality wood materials and scent sensibility.

#### Function Description

- **Performance:** 20~30% better fragrance diffusion and durability compared to other products.
- **Material:** It is made of high-quality hardwood (hardwood: Padeok, cherry tree).
- **Processing:** It is an eco-friendly product processed by hand (60~70%) with hardwood without chemical treatment.
- **Design:** Korean traditional patterns (luxury decoration effect)
- **Where to use:** Home, office, store, hotel, etc... Use as  
A diffuser holder for decoration and vehicles.
- **How to use:** Insert into the fiber stick of the diffuser bottle.  
Alternatively, wet diffuser liquid or spray with perfume.

made in KOREA

[www.treeyad.com](http://www.treeyad.com)

e-mail : [info@treeyad.com](mailto:info@treeyad.com)

# Korean Traditional Pattern

Reflecting the increasing interest in K-POP and Korean culture abroad, Designed according to the trend of Korean traditional patterns, it is a product that gives a luxurious decoration effect and allows you to feel the Korean image.



## ilwol obong do



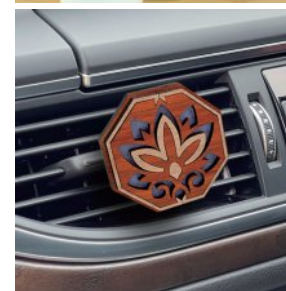
A painting placed behind a throne made in Korea in the 19th century, symbolizing health, longevity, and peace.



**Model No. :** PB-Ki1  
**Material :** Wood, Hanji(Korean Paper)  
**Body Size :** 50 x 50 x 4.5 mm  
**Body Weight :** 12g

The lotus is an old Korean traditional pattern, and is often expressed in traditional Korean cultural assets and paintings, symbolizing harmony and love.

## Lotus flower



**Model No. :** PB-KL1  
**Material :** Wood, Hanji(Korean Paper)  
**Body Size :** 45 x 45 x 4.5 mm  
**Body Weight :** 12g

# Cloud



A design that symbolizes clouds floating in the sky with a traditional Korean feel, a pattern often expressed in traditional Korean cultural assets and paintings, symbolizing authority and specialness.



**Model No. :** PB-KC1  
**Material :** Wood, Hanji(Korean Paper)  
**Body Size :** 62 x 41 x 4.5 mm  
**Body Weight :** 12g

This pattern is often depicted on the doors of traditional Korean houses, and has a long history, symbolizing communication and harmony in the family.

# Munsal



**Model No. :** PB-KM1  
**Material :** Wood, Hanji(Korean Paper)  
**Body Size :** 73 x 36.5 x 4.5 mm  
**Body Weight :** 12g

# Cloud 2

A design that symbolizes clouds floating in the sky with a traditional Korean feel, a pattern often expressed in traditional Korean cultural assets and paintings, symbolizing authority and specialness.



**Model No. :** PB-KC2  
**Material :** Wood, Hanji(Korean Paper)  
**Body Size :** 62 x 46 x 4.5 mm  
**Body Weight :** 15g

# Inlaid Celadon Crane Pattern

The crane pattern drawn on the celadon inlaid cloud and crane pattern bottle, a relic from the Goryeo Dynasty of Korea, was designed to fit the trend.



**Model No. :** PB-KIC1  
**Material :** Wood, Hanji(Korean Paper)  
**Body Size :** 50 x 56 x 4.5 mm  
**Body Weight :** 15g

# Dokkaebi pattern

The Dokkaebi pattern is a traditional symbol of protection that wards off evil and brings good fortune, embodying both dignity and playfulness.



**Model No. :** PB-KDO1  
**Material :** Wood, Hanji(Korean Paper)  
**Body Size :** 48 x 53 x 4.5 mm  
**Body Weight :** 15g

# Hangeul

A contemporary reinterpretation of traditional lattice designs using the geometric beauty of Korean consonants and vowels.



**Model No. :** PB-KHA1  
**Material :** Wood, Hanji(Korean Paper)  
**Body Size :** 78 x 41 x 4.5 mm  
**Body Weight :** 15g

# Korean cultural heritage

## Lotus flower



PB-KL2



PB-KL3

**Material :** Wood, Hanji(Korean Paper)  
**Body Size :** 50 x 56 x 4.5 mm  
**Body Weight :** 15g

The lotus is an old Korean traditional pattern, and is often expressed in traditional Korean cultural assets and paintings, symbolizing harmony and love.

## Munsal



PB-KM2



PB-KM3

**Material :** Wood, Hanji(Korean Paper)  
**Body Size :** 48 x 53 x 4.5 mm  
**Body Weight :** 15g

This pattern is often depicted on the doors of traditional Korean houses, and has a long history, symbolizing communication and harmony in the family.

## Samjok-o



PB-KK1



PB-KS1

## Smile of Silla

**Material :** Wood, Hanji(Korean Paper)  
**Body Size :** 50 x 56 x 4.5 mm  
**Body Weight :** 15g

The Smile of Silla is the gentle, serene expression found on Buddhist statues, embodying compassion and tranquility. It reflects the refined aesthetic sensibility and spiritual world of the Silla people.

In ancient Korea's Goguryeo kingdom, the three-legged emblem associated with Jumong symbolizes the Samjoko, a sacred sun emblem. It represents the divine legitimacy of royal authority and Goguryeo's rule under the heavens.

## Korea inlaid celadon 1



A modern reinterpretation of a 10th-century Korean celadon maebyeong decorated with inlaid cloud and crane patterns, redesigned to suit contemporary trend

A product that can be assembled by yourself DIY

**Model No. :** PB-KH1-D  
**Material :** Wood  
**Body Size :** 35 x 35 x 65 mm  
**Body Weight :** 10g



## Korea inlaid celadon 2



A modern reinterpretation of a 10th-century Korean celadon maebyeong decorated with inlaid cloud and crane patterns, redesigned to suit contemporary trend

A product that can be assembled by yourself DIY

**Model No. :** PB-KH2-D  
**Material :** Wood  
**Body Size :** 45 x 30 x 64 mm  
**Body Weight :** 10g



## Korea inlaid celadon 3



A modern reinterpretation of a 10th-century Korean celadon maebyeong decorated with inlaid cloud and crane patterns, redesigned to suit contemporary trend

A product that can be assembled by yourself DIY

**Model No. :** PB-KH3-D  
**Material :** Wood  
**Body Size :** 30 x 30 x 64 mm  
**Body Weight :** 10g



# Design that applies the characteristics of tourist destinations



SEOUL

Designed to symbolize King Sejong, Namdaemun, and Namsan Tower in Seoul



GYEONGJU

Designed to symbolize Seokguram Grotto, Cheomseongdae, and Dabotap in Gyeongju



ANDONG



YONGIN

- By marking QR code, easy access to local information



## For regional promotions OEM products

- For store promotions  
(Cattle House / Korea / Large butcher shop)

- If you have a desired shape, pattern, logo, etc., we will design it and make it into a product.
- A senior designer will directly carry out design, engineering, and planning to add differentiation and uniqueness.

## Product Description

### Basic Options



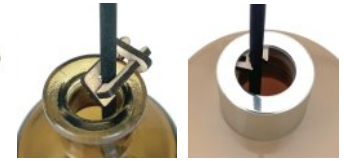
Car Ventilation Clip



Stand



Stick Fixing Device



Usage Examples

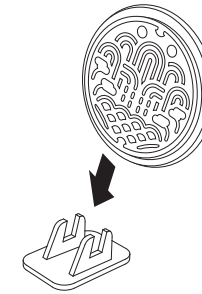
### How to Use



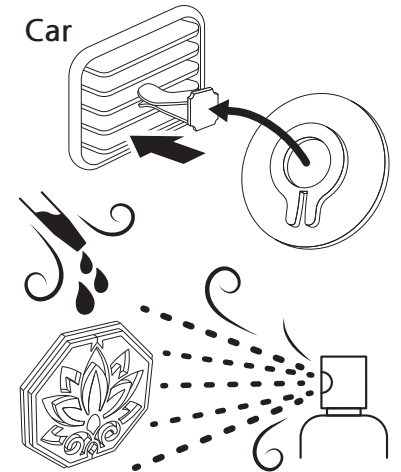
Stick Mounting

- Attach it to the fiber stick of the bottle. (Recommended stick thickness is 4-5mm.)
- The scent will naturally spread as it is absorbed through the fiber stick.

### Stand



### Car



- When using a car or stand, spray or wet it.
- Wet it thoroughly at first, and then spray once every 5 to 7 days.
- If you want a strong scent, spray it every 1 to 3 days.

### Package



Size : 90 x 90 x 30 mm  
Weight : 35g

